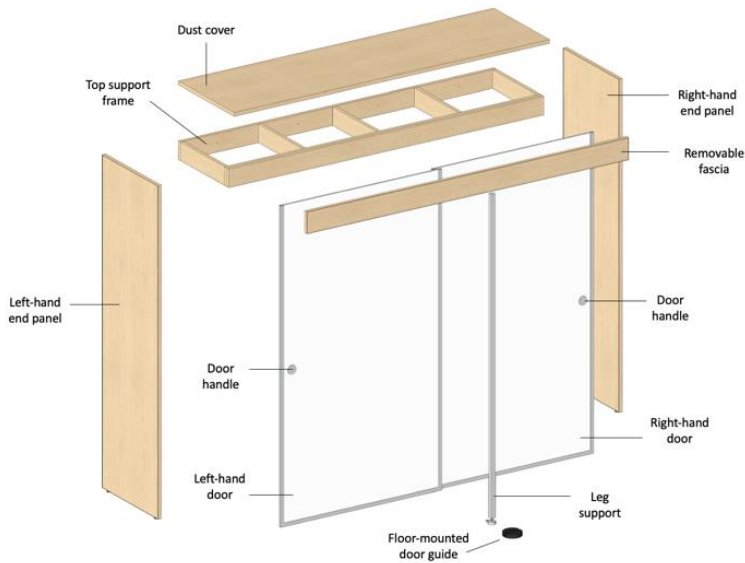




# Show & Stow System Assembly Instructions



## Tools required

- Level (48" L is best)
  - Hammer
  - Rubber mallet
  - Flathead screwdriver
  - Phillips head screwdriver
  - Drill and drill bit(s)
  - Tape measure
  - Allen head wrench
  - Applicable wall mounting hardware
- Drywall: Wall anchors  
 Wood studs in drywall: Wood screws  
 Steel studs: Self-tapping steel screws  
 Brick and concrete: Tapcon concrete screws

## Parts List

Part Name	Part Number	Qty	Unit of Measure	Dimensions
Left-Hand End Panel	SSLEP	1	Each	89-1/2"H x 26"W x 1"D
Right-Hand End Panel	SSREP	1	Each	89-1/2"H x 26"W x 1"D
Top Support Frame (part of assembled canopy)	SSTSP	1	Each	94"W x 23-13/32"W x 5"H
Dust Cover (part of assembled canopy)	SSDC	1	Each	94"W x 26"W x 1"D
Removable Fascia	SSRF	1	Each	96"W x 6"H x 1"D
Left-Hand Door (handle mounting hole on left)	SSLHD	1	Each	86-1/4"H x 48-1/32"W x 11/16"D
Right-Hand Door (handle mounting hole on right)	SSRHD	1	Each	86-1/4"H x 48-1/32"W x 11/16"D
Leg Support with Foot Installed	SSALS	1	Each	1-1/4" x 1-1/4" sq. x 87"H. (includes 2x Allen Bolts and Floor Glide)
Fascia Track (part of assembled canopy)	GT70048	1	Each	94"L
Door Install Spacer (labeled Pry Board)	SSDIS	1	Each	
<b>Hardware Kit</b>				
L Brackets	53019	4	Each	2-1/2"H x 1-5/16"W
Door Handles	SL-2.5PCAP	2	Each	2-1/2" dia. x 5/16"H
Door Handle Attachment Bolt	SO-SCB	2	Each	5/8" head dia., 23/32" thread length, 5/16-18" thread size.
Door Hanging Bracket	GT7034	6	Each	
Track Rollers	GT7000N	6	Each	
Door Stoppers	GT7014	4	Each	
Wall Spacer Kit	SSWSK	1	Each (Kit of 8)	5" x 5" sq. Quantities: 4x 1/2"D, 4x 1/4"D
Wood Dowels		12	Each	
End Panel Attachment Fittings, Bolts		12	Each	5/16" x 1-1/2"
End Panel Attachment Fittings, Washers		8	Each	5/16" x 1-1/4"
End Panel Attachment Fittings, Washers		4	Each	5/16" x 7/8"
End Panel Attachment Fittings, Lock Washers		12	Each	5/16"
Door Mounting Fittings		12	Each	Fittings to attach doors to Door Hanging Bracket: 12x T-nuts
Door Mounting Fittings		12	Each	Fittings to attach doors to Door Hanging Bracket: 12x machine screws
Fascia Attachment Fittings and Leg Support Fittings		8	Fitting Set	Connector Bolts 8x 1/4", 20 x 50mm (6 to attach fascia to dust cover, 2 to attach leg support)
Door Guide Fittings		1	Fitting Set	Fittings to attach door guide to floor: 2x Hexhead Tapcon, 3/16" dia. x 1-3/4"L and 2x black cover caps
L Bracket Fittings		1	Fitting Set	Fittings to attach L Brackets to floor and end panels: 4x Hexhead Tapcon, 3/16" dia. x 1-1/4"L; 4x Phillips Round Head Wood Screws, 3/4" long thread
Leg Support Fittings		1	Fitting Set	1x Hexhead Tapcon – 3/16" dia. x 1-1/4"L, 1x washer
Floor-Mounted Door Guide	SSFMG	1	Each	5" dia. x 1"H
Assembly Instructions		1	Each	
Lock	B00I386R30	1	Each	

## Assemble the Surround

1. Prepare the frame. Lay the canopy, left-hand end panel, and right-hand end panel on the floor near where unit will be installed.  
**Note:** Holes will face the interior of the unit and will line up with the canopy (fig. 1).



fig. 1

2. Attach the end panels. Hold the canopy vertically with the aluminum track facing down (fig. 2). With the finished end panel edge facing down, attach the right-hand end panel (fig. 3). Repeat for the left-hand end panel (fig. 4). **Tip:** Ensure top dust cover and end panels remain flush when tightening bolts (fig. 5).



fig. 2



fig. 3



fig. 4



fig. 5

3. Keeping the same side facedown, position the unit near the wall where it will be installed. The bottoms of the end panels should be approximately 3' from the wall.
4. Enlist the help of a third person. Position one person at each end panel and one at the canopy, and work together to tilt the unit upright (figs. 6, 7, 8).



fig. 6



fig. 7



fig. 8

5. Once upright, move the unit into its final position against the wall (fig. 9). **Tip:** Rather than picking the unit up, use the end panels as supports to "walk" it into position.



fig. 9

## Attach the Unit to the Wall

1. Check that the unit is level, both horizontally and vertically. Place the level on the left-hand end panel's flat surface and front-facing edge to ensure the panel is truly vertical (figs. 10, 11). Repeat for the right-hand end panel. Place the level on top of the canopy to ensure the unit is level across (fig. 12). Use the glides to make any necessary adjustments, ensuring there is at least 5/8" space between the floor and the bottom of the side panel (fig. 13).



fig. 10



fig. 11



fig. 12



fig. 13

2. Install the unit. We recommend mounting to a solid surface, such as a concrete wall, brick wall, wood studs, or steel studs. If mounting to drywall (not studs), use drywall anchors for greater security.

### Solid Surface or Stud Installation

- a. Using the four predrilled mounting holes in the rear face of the canopy as a guide, drill four pilot holes into the wall (fig. 14).



fig. 14

- b. To ensure the unit stands clear of baseboards, insert the required wall spacer(s) (1/4", 1/2", or combined 3/4") between the wall and the back of the unit (figs. 15, 16, 17).



fig. 15



fig. 16



fig. 17

- c. Use the appropriate hardware to attach the unit to the wall (fig. 17).

## Drywall (Non-Stud) Installation

- a. Using the four predrilled mounting holes in the rear face of the canopy as a guide, drill four pilot holes into the wall (fig. 14)



fig. 14

- b. Make a small mark on the wall approximately 1/2" directly under each hole. You will use this as a guide later (fig. 18).



fig. 18

- c. Move the unit aside.

- d. Drill larger holes to accommodate the wall anchors, if needed (fig. 19). Insert the anchors (figs. 20, 21, 22).



fig. 19



fig. 20



fig. 21



fig. 22

- e. Move the unit back into position using the marks you made earlier as a guide.

- f. To ensure the unit stands clear of baseboards, insert the required wall spacer(s) (1/4", 1/2", or combined 3/4") between the wall and the back of the unit (figs. 15, 16, 17).



fig. 15



fig. 16



fig. 17

- g. Use the appropriate hardware to attach the unit to the wall (fig. 23).



fig. 23



## Attach the End Panels to the Floor

1. Check that the unit is level vertically. Place the level on the left-hand end panel's flat surface and front-facing edge to ensure the panel is truly vertical. Repeat for the right-end panel. (fig. 24).



fig. 24

2. On the inside face of the left-hand end panel, attach two L brackets. **Measuring from the center of the bracket**, position the first bracket 4" from the front edge of the end panel and the second bracket 4" from the back edge (fig. 25). Repeat for the right-hand end panel. Secure brackets to floor using 1-1/4" screws provided (fig. 26). Attach to end panels using wood screws provided (fig. 27).



fig. 25



fig. 26



fig. 27

**STOP!**

If your Show & Stow System includes shelving, turn to **page 12** to complete shelving installation BEFORE proceeding.

## Install the Door Hardware

1. Install one stopper onto the front track and one onto the rear track. With the rubber bumpers facing left, slide the bumpers onto left end of track (fig. 28). Move the bumpers to the right end of track (fig. 29). They'll be locked into place later.



fig. 28



fig. 29

2. Install six rollers onto the tracks (three on the front track and three on the rear). With the keyhole slot on the roller facing outward, slide the roller on from the left end of the track (figs. 30, 31, 32, 33, 34).



fig. 30



fig. 31



fig. 32



fig. 33



fig. 34

3. Install the threaded inserts into the back of each door with a rubber mallet (fig. 35).



fig. 35

4. Attach three hanging brackets to the top of each door with the hardware provided. Ensure the long, flat part of the bracket with the diagonal mounting slots is placed onto the whiteboard side of the door (figs. 36, 36). **Tip:** Do not fully tighten the fittings yet. This will save time and make it easier to adjust during installation.



fig. 36



fig. 37

## Hang Doors



Scan QR code (left) or visit link (below) to see video instructions for hanging doors.  
[youtu.be/guRPCpd6mtE](https://youtu.be/guRPCpd6mtE)

1. Determine which door is the right and which is the left. The right-hand door has its handle hole on the right and the left-hand door has its handle hole on the left.
2. Position the right-hand door (handle hole on right) for installation onto the **rear** track. **Tip:** Place the spacer provided on the floor where the door will be hung (fig. 38). This spacer will act as a shim and help support the weight of the door at an appropriate height during hanging.



fig. 38

3. Place the door on the spacer approximately 2" in front of the mounting track (fig. 39). Ensure the three hanging brackets at the top of the door are loose enough to adjust.



fig. 39

4. Move the rollers on the track to align with the hanging brackets (fig. 40).



fig. 40

5. Gradually slide the door forward and hook the three hanging brackets onto the three track rollers (fig. 41).



fig. 41

6. Tighten the lock nuts on the hanging brackets to secure them to the track rollers (figs. 42, 43).



fig. 42



fig. 43

**NOTE**

Hang and level right-hand door before hanging left-hand door.

## Level Doors



Scan QR code (left) or visit link (below) to see video instructions for leveling doors.  
[youtu.be/IPA1gdKsT1o](https://youtu.be/IPA1gdKsT1o)

1. With the door still on the spacer, push the door against the right-hand end panel so the door's edge is flush and snug with the end panel along its full length (fig. 44).



fig. 44

2. Move the door hanging bracket to the lowest position possible by pushing down firmly on it.
3. Ensure the door is standing directly under the **rear** track, perpendicular to floor. Tighten the hanging bracket fittings (two per bracket, six total) (fig. 45).



fig. 45

4. When all fittings have been tightened, remove the spacer.
5. Test that the door hangs flush with the end panel by sliding the right-hand door against the right-hand end panel. Adjust if needed to minimize gaps.
6. Use the predrilled hole with the fitting provided to attach the door handles, one per door (figs. 46, 47, 48).



fig. 46

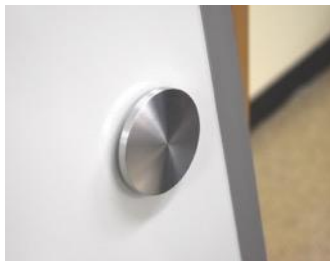


fig. 47



fig. 48



## Mount the Door Guide



Scan QR code (left) or visit link (below) to see video instructions for mounting the door guide.  
[youtu.be/6-bg49F5tSM](https://youtu.be/6-bg49F5tSM)

1. Slide both doors against the left-hand end panel.
2. Place the door guide on the floor in line with the doors.
3. Slide the door guide left to engage it with the right-hand edges of the doors (fig. 49). It may be a tight fit; once leg is installed, doors will slide more easily.



fig. 49

4. Center the door guide. The center of the guide will be 47" from the inside face of either end panel (fig. 50).



fig. 50

5. Ensure the doors are hanging parallel with the end panel's front edges (fig. 51). Move the guide forward or backward if needed.



fig. 51

6. Drill two holes into the floor through the two guide mounting holes (fig. 52).



fig. 52

7. Attach the door guide to the floor with two of the 1-3/4" screws provided.
8. Install the black cover caps to conceal the fittings.

## Attach the Leg Support



Scan QR code (left) or visit link (below) to see video instructions for attaching the leg support.  
[youtu.be/b\\_FVoIPZmMw](https://youtu.be/b_FVoIPZmMw)

1. Attach the leg to the underside and inside face of the canopy via two mounting points (fig. 53).



fig. 53

2. Adjust the leg's glide until it contacts and is snug against the floor.
3. Position the glide mounting hole plate so it faces into the unit, perpendicular to the wall (fig. 54).



fig. 54

4. Use a level to ensure the leg is truly vertical (fig. 55).



fig. 55

5. Attach the glide to the floor using the washer and 1-1/4" screw provided (fig. 56).



fig. 56

6. Use a wrench to adjust the floor glide. Torque the glide incrementally to address any canopy top deflection (fig. 57). **Tip:** Use a flat edge or level on top of the canopy to determine when the canopy is flat (fig. 58).

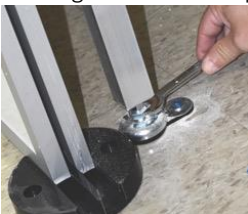


fig. 57



fig. 58

## Install the Fascia and Stoppers

1. Insert the provided dowels into the holes in the front face of the canopy (fig. 59).



fig. 59

2. Lift the fascia onto the front of the unit (fig. 60) and align the holes in the back of the fascia with the dowels. Apply pressure to slide the fascia over the dowels (fig. 61). Tap into place until flush.



fig. 60



fig. 61

3. Use the six Allen head fittings provided to securely attach the fascia to the unit (fig. 62).



fig. 62

4. Add two more stoppers onto the left-hand end of the tracks, with the stoppers facing right.
5. Slide all four stoppers to the correct distance to stop the doors' edges from hitting the end panels as they slide. **Tip:** We recommend allowing a 1/8" to 1/4" clear gap at most.
6. When positioned correctly, tighten the set screw to hold in place (fig. 63).



fig. 63

## Install the Lock

You will install the lock on the **lower left-hand corner of the right-hand door**.

1. To make installation easier, slide the right-hand door to the left until the door sits flush with the left upright panel.
2. Unpack the lock. Bend the small tab on the ratchet plate (fig. 64) so the ratchet sits completely flat (fig. 65).



fig. 64



fig. 65

3. Ensure the lower left-hand corner of the right-hand door is clean and clear of dust or debris.
4. Peel the paper backer off the adhesive strip to expose the adhesive surface.
5. Use the aluminum door frame as a guide to position the ratchet on the **lower left-hand corner of the right-hand door**. The ratchet should sit inside the aluminum frame, **hole on left and slots on right** (fig. 66).



fig. 66

6. Apply pressure to the ratchet to adhere the adhesive to the whiteboard surface.
7. Slide the right-hand door back to the right-hand position (fig. 67).
8. Slide the lock into the guide channels on the ratchet (fig. 68). Adjust as needed. Lock with key.



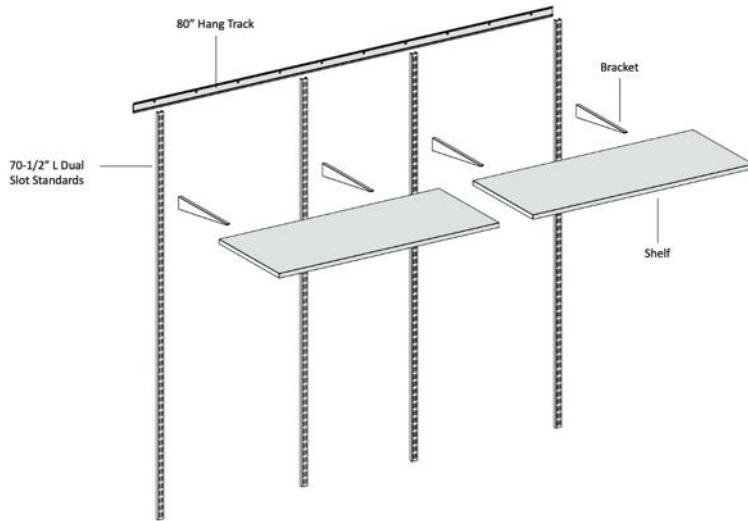
fig. 67



fig. 68

# Shelving Installation

(Complete this step before Door Hardware Installation or Pegboard Installation)



### Tools required:

- Drill and drill bit(s)
- Phillips head screwdriver
- Tape measure
- Applicable wall mounting hardware
  - Drywall: Wall anchors
  - Wood studs in drywall: Wood screws
  - Steel studs: Self-tapping steel screws
  - Brick and concrete: Tapcon concrete screws

### Parts List

Part Name	Part Number	Qty	Unit of Measure	Dimensions
Hang Track	6UDJ7 (Demco #138-13740)	1	Each	80"L x 1-3/4"H
L Dual Slot Standards	33TZ41 (Demco #138-13750)	4	Each	70-1/2"L x 1"W x 1/2"D
Shelf	SSSHF	6, 8, or 10	Each	42"L x 18"W x 3/4"D
Wood Screws		2 per shelf	Each	#8 x 1-1/4" Zinc Phillips Head Screw
Shelf Bracket	33TZ43 (Demco #138-13760)	2 per shelf	Each	14-1/2"L x 2-1/8"H x 1/2"D

### Install the Shelving

1. Position the horizontal 80" rail directly under the back edge of the unit's rear canopy. Position the rail in the center, 7" from each end panel (fig. 69). **Note:** Mounting holes should be toward the top of the rail.



fig. 69

2. Using the predrilled holes as a guide, drill pilot holes into the wall (fig. 70).



fig. 70



3. Remove the rail to add fittings as required for wall type.

Drywall: Wall anchors

Wood studs in drywall: Wood screws

Steel studs: Self-tapping steel screws

Brick and concrete: Tapcon concrete screws

4. Attach rail to wall (fig. 71).



fig. 71

5. Hang the slotted standards from the rail. Hook the top of the standard onto the angled top edge of the rail.
6. **All measurements are from the center of the standards.** Position the first standard 2" from the end of the mounting rail (fig. 72). Position the second standard 27-1/2" from the first (fig. 73). This creates a pair of standards that will accept brackets and shelves.



fig. 72



fig. 73

7. Screw each hanging standard to the wall at its base through the mounting hole provided (fig. 74).

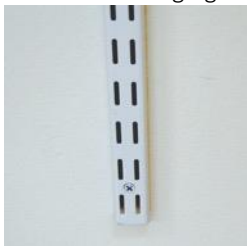


fig. 74

8. Hook one shelf bracket into each standard. **Tip:** Keep the brackets parallel to each other by counting the open slots above each. We recommend initially positioning the top brackets with eight empty slots visible above each.
9. Place a shelf onto the brackets. Ensure the shelf is centered and pushed back against the standards (fig. 75).



fig. 75

10. From the underside of the shelf, use the wood screw provided to attach the shelf through the slot at the front of the bracket (fig. 76).



fig. 76

11. Repeat this process for each additional shelf. **Tip:** We recommend initially leaving seven open slots between each bracket and the one above it. This will achieve an approximate clearance of 11-3/4" between shelves.

If you have a pegboard to install, continue to next page. If not, return to page 6 to complete assembly of your Show & Stow System.

# Pegboard Installation

## Parts List

Part Name	Part Number	Qty	Unit of Measure	Dimensions
Pegboard	S&S PEGBOARD	1	Each	39-3/4"H x 46-3/4"W x 3/4"D overall
Pegboard Cup Display For Pegboard	224053	1	Each	3"H x 3" Diameter
Straight Hooks For Pegboard	H-2687	1	Each	4 -1/4" L in total, hooks are 3"L
Straight Hooks For Pegboard	H-2688	1	Each	6-1/4" L in total, hooks are 5"L,
Double Straight Hooks For Pegboard	H-2691	1	Each	6-3/8" L in total, hooks are 5"L x 1-1/4" W
Double Ring Tool Holder For Pegboard	H-2697	1	Each	Rings are 7/8" in diameter and 1-1/4" apart

## Pegboard Only (No Shelves)

1. Position the pegboard (fig. 77):
  - a. Place the top edge of the pegboard against the underside of the closet's canopy.
  - b. Ensure the pegboard is touching either the left-hand or right-hand end panels (depending on which side you are installing).
2. Once positioned, use the eight hole placements in the pegboard to drill into your wall.
3. Use the appropriate hardware for your wall type (not included).

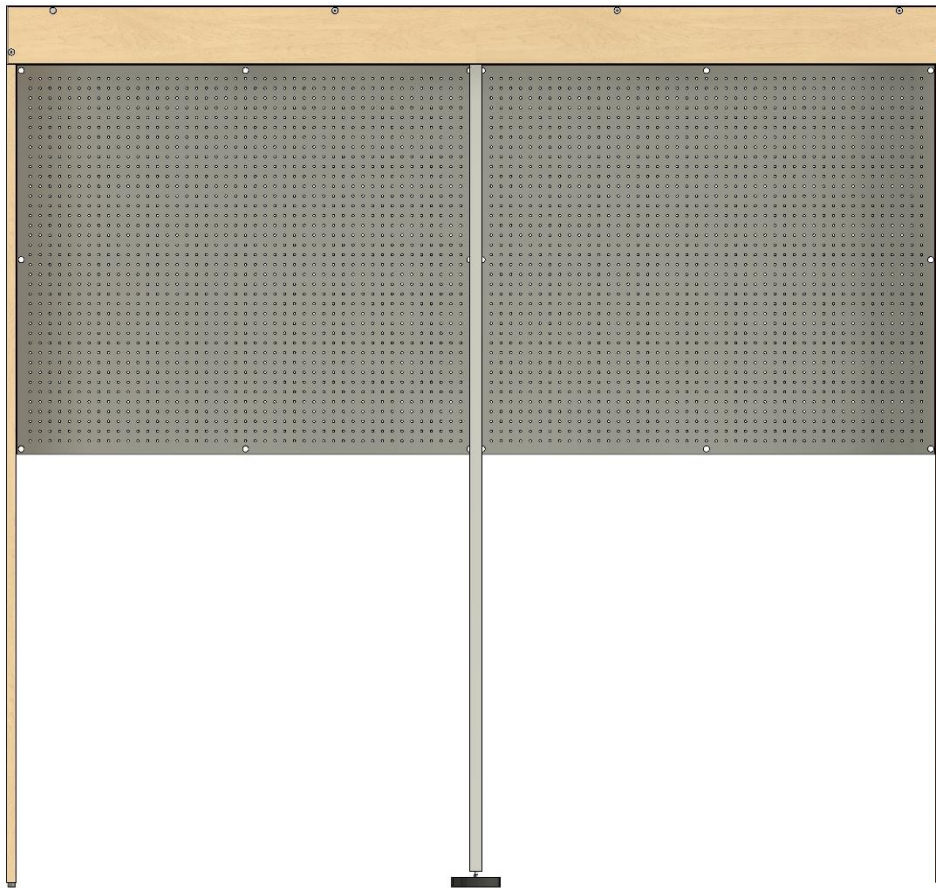


fig. 77 (Two pegboards shown)

## Pegboard and Shelves

1. Position the pegboard (fig. 78):
  - a. Place the top edge of the pegboard against the underside of the horizontal shelving rail.
  - b. Ensure the pegboard is touching either the left-hand or right-hand end panels (depending on which side you are installing).
2. Once positioned, use the eight hole placements in the pegboard to drill into your wall.
3. Use the appropriate hardware for your wall type (not included).

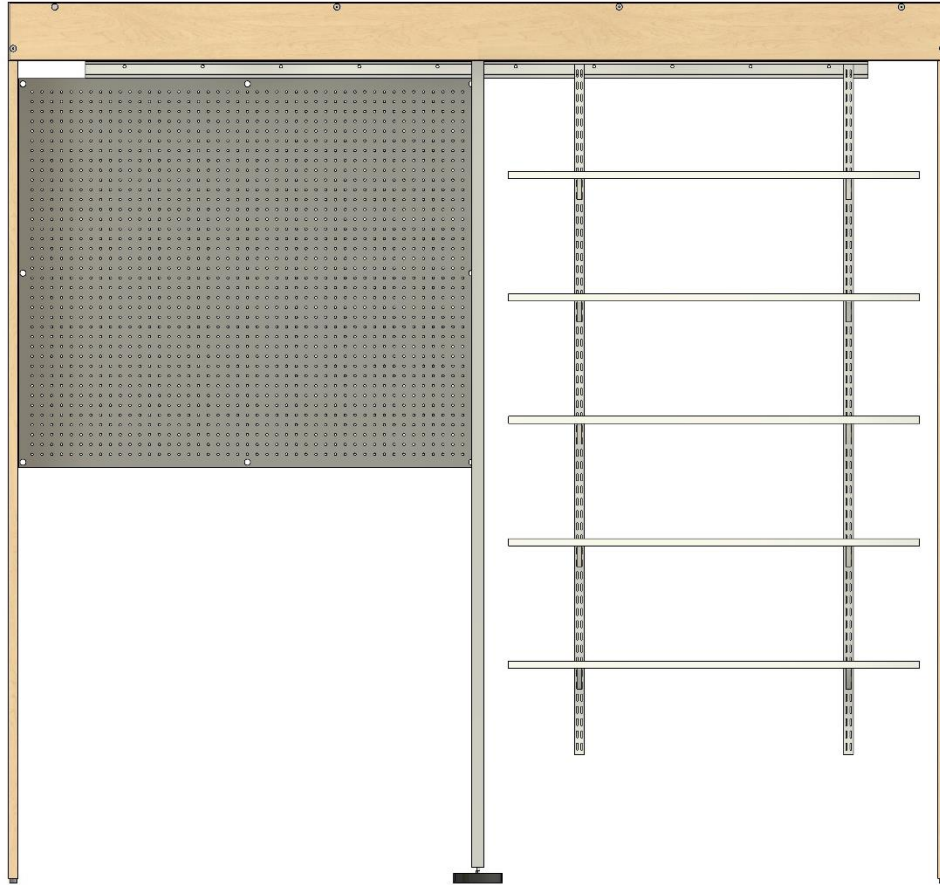


fig. 78

When shelving and pegboard installation is complete, return to page 6 to complete assembly of your Show & Stow System.